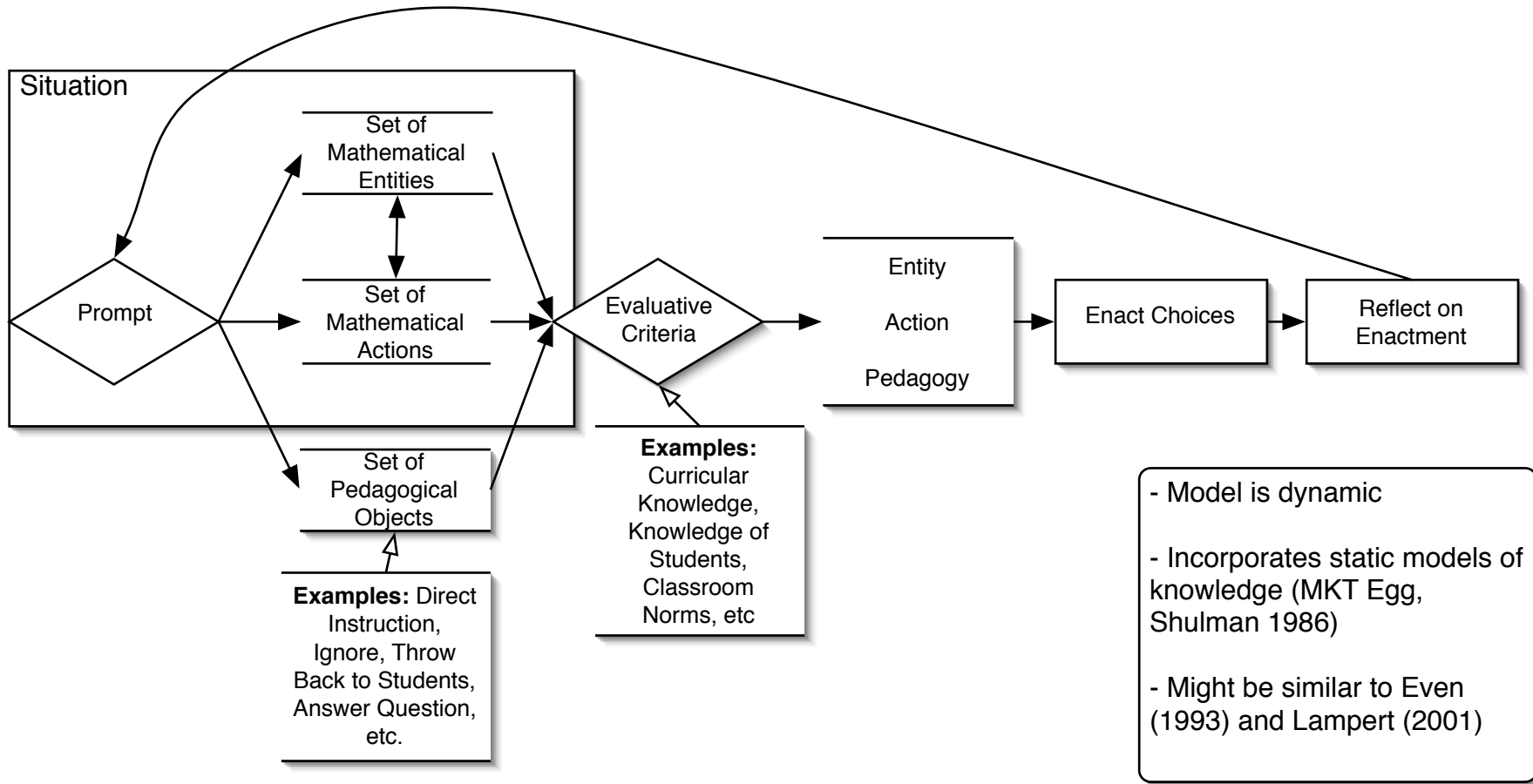


Decision Making Moments in Teaching



- Model is dynamic
- Incorporates static models of knowledge (MKT Egg, Shulman 1986)
- Might be similar to Even (1993) and Lampert (2001)

When the prompt occurs, a teacher can choose from the set of mathematical entities, mathematical objects, and pedagogical actions and objects. Using other knowledge as evaluative criteria, the teacher chooses which entities, actions, and pedagogy to enact. After that enactment, the teacher reflects upon, well, something.